

Dealer: \_\_\_\_\_  
 Siding Color: \_\_\_\_\_ Fiberglass  
 Decal Color: \_\_\_\_\_  
 S.G. Color: \_\_\_\_\_  
 Customer: \_\_\_\_\_  
 Order Date: \_\_\_\_\_

**Frame Options**

MFG: \_\_\_\_\_  
 Galvanized  
 Yes:  No:

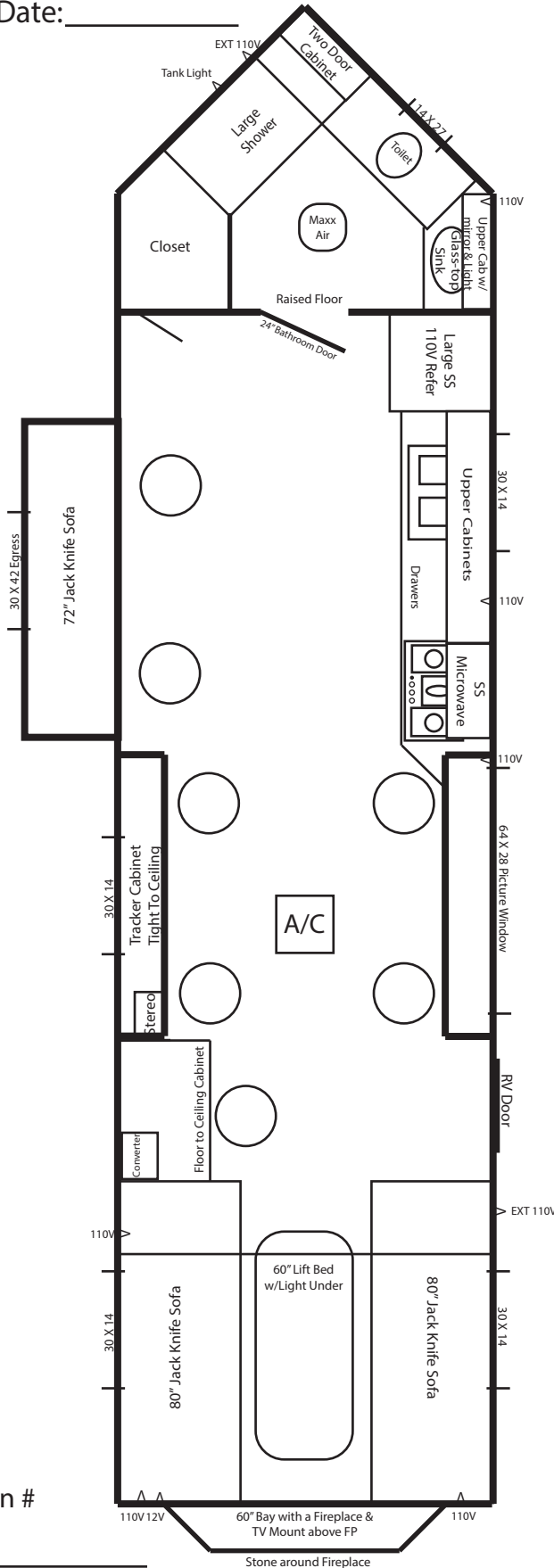
**8 X 28V Black Knight**

~ 2022

- Dual Axle Heavy Duty Hydraulic Frame
- Arctic Insulation
- 90" Sidewalls
- 7 Holes with Lights
- Grey Panel Interior
- Stained Pine Cabinets and Trim
- Cove Molding
- Grey Wood-Look Vinyl Floor
- Flat Ceiling
- Black A/C w/Thermostat
- Power Slide-Out Room
- Maxx Air Fan
- BLACK Windows

- LED Inside and Out
- Can Ceiling Lights
- Wire & Brace for TV
- Black Digital TV Antenna
- Wire for Portable Satellite
- Stereo w/4 speakers
- 12V Recepts
- 110V Recepts & Exterior
- LED Striplights - Ceiling/Under Counter
- Exterior Speakers w/Lights

- Raised Bathroom w/toilet & Large shower
- Grey Water Bypass
- Cabinet in Bath w/Mirror
- Vanity w/Glass Top Sink in Bathroom
- Furion Cooktop & Oven
- SS Range hood w/vent
- Double Stainless Steel Sink
- Stone Back Splash -Stove to Fridge & Bay
- SS Microwave
- SS Large 110V Refrigerator
- Flat Panel Doors w/New Hinges
- Tall Tracker Cabinet to Ceiling
- Mini Blinds
- 40,000 BTU Furnace
- 3 ~ Jack-Knife Sofas
- 60" Electric Lift Bed w/Light Under
- 21' Power Awning
- 60" Bay w/Fireplace & TV Hookups Above



Production # \_\_\_\_\_

\_\_\_\_\_  
 \_\_\_\_\_