

Dealer: \_\_\_\_\_  
 Siding Color: \_\_\_\_\_ Fiberglass  
 Decal Color: \_\_\_\_\_  
 S.G. Color: \_\_\_\_\_  
 Customer: \_\_\_\_\_  
 Order Date: \_\_\_\_\_

**Frame Options**

MFG: \_\_\_\_\_

Galvanized

Yes:  No:

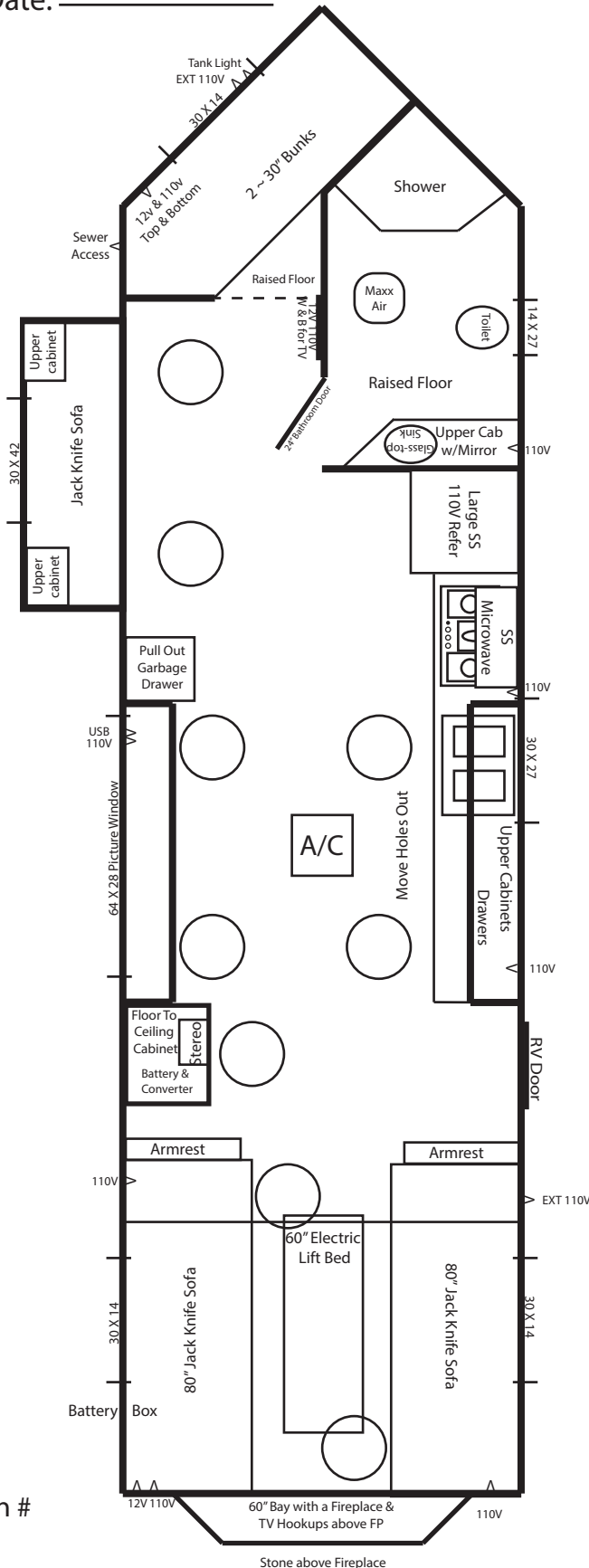
**8 X 28V Eagle EXT**

~ 2022

- Dual Axle Heavy Duty Hydraulic Frame
- Arctic Insulation
- 90" Sidewalls
- 9 Holes with Lights
- Tan Panel Interior
- Walnut Stained Cabinets
- Cove Trim
- Flat Ceiling
- Brown Vinyl Wood-Look Flooring
- RV Door
- A/C w/ Thermostat
- Maxx Air Fan
- Power Slideout Rooms

- LED inside and out
- Can Ceiling Lights w/Dimmer Switch
- 2 ~ Wire & Brace for TV
- Digital TV Antenna
- Wire for Portable Satellite
- Stereo w/4 speakers
- 12V Recepts
- 110V Recepts & Exterior
- Exterior Speakers w/Lights
- LED Striplights at Ceiling

- Bathroom w/toilet & shower
- Vanity w/Glass Sink in Bathroom
- Stone Backsplash in Whole Kitchen
- Furion Cooktop & Oven
- SS Range hood w/vent
- SS Double Sink
- SS Microwave
- Large SS Refrigerator
- Flat Panel Doors w/New Hinges
- Brown cushions
- Brown Mini Blinds
- 30,000 BTU Furnace
- 3 ~ Jack Knife Sofas
- 60" Electric Lift Bed
- 2 ~ 30" Bunks
- 21' Power Awning
- 60" Bay w/Fireplace & TV Hookups
- Picture Window
- 4" Interior Stoneguard
- New Countertop



Production # \_\_\_\_\_

\_\_\_\_\_

\_\_\_\_\_

\_\_\_\_\_

\_\_\_\_\_